



CISM National Network
 Maynooth Seminar
 15 March 2011
 Sean Hogan

Introduction

- Review development of EM in Ireland
- What aspects are relevant to CISM National Network?
- Where we need to go with psycho-social support issue?
- Some experiences of co-ordination

Emergency Management/ Civil Protection Brief

- International – EU Civil Protection
 - MIC, DG Echo, UNDAC
- National Level EM
 - Participate in GTF/ IDWG
- Department Level
 - EHLG as LGD (multiple scenarios incl NEPNA, severe weather, fire/ bldg collapse, haz mat, environment etc
 - Severe Weather Emergencies – Winter 2009/ 2010 & 2010/ 11
- MEM National Steering Group
 - Inter PRA Co-ordination, Chair and support NSG and NWG, Framework / MEDP.....
- Local Authority preparedness
- Link with VES/ Community sectors

Recent National Crises

Crisis	LGD	Affects
Avian Flu	D/ Ag	Poultry
H1N1	D/Health	Public
Pork Crisis	Ag/ Health	Farm
Flooding	Env	Community
Severe Cold	Env	General
Volcanic Ash	Trans	Travel
Severe Cold	Env	Gen

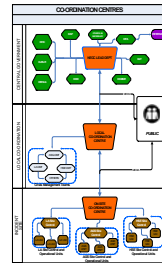
Recent Events/ Emergencies

- Multiple fatality road traffic collisions
- Cork Airport – Feb 2011
- Malahide Rail – Aug 2009
- Previous Major Emergencies

Concept of Co-ordination

- Different perspectives on what co-ordination means
- Complex world – multiple players, groups and levels
- Organisational responsibility and collective action?
- Decision-making?
- Structure/ Architecture for Co-ordination
- Processes to underpin concept
- Preparedness
- Key determinant of outcome in crisis/ emergency

Multi-Level Co-ordination



- Major emergencies managed by local response services
- Co-ordination Levels
 - Site(s); Local; Regional; National; International
- Communication/ information flows between levels

The Framework for Major Emergency Management 2006



Commissariat, Ombudsman agus Inneachair
Environment, Heritage and Local Government



Bailiúchán na hÉireann
Health Services Executive

A Framework enabling An Garda Síochána, the Health Services Executive and Local Authorities to prepare for and make a co-ordinated response to major emergencies resulting from local and regional events, such as fires, transport accidents, hazardous substances incidents and severe weather.

Milestones in MEM Framework Project

- Review commissioned – Nov 04
- Review Process & Drafting – 2005
- Government approval – May 2006
 - New Framework
 - Development Programme 2006 – 08
 - National Steering Group
- MEDP commenced – 12 Sept. 2006
- Cut-over to new system as planned- 30 Sept 2008
- Co-ord of Flooding and Severe Cold 2009/2010
- ME declared at Cork Airport – Feb 2011

Lessons from MEM Framework Project...

- Need accepted by key decision-makers...
- Working Structure and processes established...
- International literature, benchmarking & oversight.....
- Framework as “Bible”, with principles, language etc..
- 2 Year Programme – steps from current to desired position....
- Mandate and Leadership.....
- Visible impact in crisis.....need to consolidate..

MEM Framework and Psycho-social Support

- Section 5.7.8 of the Framework
 - Each PRA should have systems for own staff
 - “psycho-social care/ support” – provision of practical help and information as well as social, emotional and psychological support to members of public who may be affected by an emergency
 - HSE have primary responsibility for provision of psycho-social support
 - On-site Co-ordination Group to establish the likely nature, dimensions, priorities and optimum location for the delivery of psycho-social support that may be required
 - Local Co-ordination Group to consider to issue for locations away from site

Lessons from NCG...

- Model for “whole of government”.....
- Different categories of crisis.....
- Provision of Public Information is critical...
- Support for persons affected by flooding Nov 2009.....
- Horizontal (27 Organisations) and Vertical (integrating national and local....)
- Developing a national “hymn sheet” for all participants....

Conclusion

- What is needed for Government and public to be confident.....?
- Generic co-ordination systems, with varying depths of **preparedness** for different scenarios?
- Different backgrounds, perspectives.....
- Informed debate
- Challenges to be addressed.....
- Reflections on EHLG work....
- Build from this and other experience...